



## SUPPLEMENTARY REGULATIONS FOR THE FIM ENDUROGP WORLD CHAMPIONSHIP

The Federação Motociclismo de Portugal (FMP) and the Associação Natureza Extreme will promote the ENDUROGP - PESO DA RÉGUA ARMAMAR, second round of the 2022 FIM Enduro World Championship. The event will be held in accordance with the Sporting Code of the FIM together with the relevant Appendices, these Supplementary Regulations and any final instructions approved by the FIM Race Direction.

The event will be held in: PESO DA RÉGUA E ARMAMAR, PORTUGAL

Date: May 13, 14 and 15 of 2022

IMN	Championships or Cups
402/02	EGP (E1, E2, E3)
404/02	EJ (J1, J2)
410/02	EY
411/02	EW
416/02	OPEN
Other identification support race	National Open

### ACCESS

Nearest airport:	OPORTO FRANCISCO SÁ CARNEIRO		
Motorway:	A4 PORTO TO VILA REAL; A24 VISEU	Exit:	PESO DA RÉGUA
National road:			
Nearest town:	VILA REAL / LAMEGO / ARMAMAR	at km:	27KM /17KM / 17KM

### Organiser:

Name (Club):	ASSOCIAÇÃO NATUREZA EXTREME
Address:	QUINTA DO FIAL, Nº 80
Tel. no.:	+351 961952543
E-mail:	<a href="mailto:FILOPE.SAMPAIO@DOUROPHARMA.PT">FILOPE.SAMPAIO@DOUROPHARMA.PT</a>
Social media:	Enduro_rotas_do_douro (Instagram)

### Accommodation service:

Name:	
Address:	5030-409 SANTA MARTA PENAGUIÃO
Tel. no.:	
E-mail:	<a href="mailto:RITA.CARVALHO@DOUROPHARMA.PT">RITA.CARVALHO@DOUROPHARMA.PT</a>
Social media:	@naturezaextreme (Facebook)

### Secretariat of the event:

Address:	AVENIDA DO DOURO, PESO DA RÉGUA	E-mail:	<a href="mailto:RITA.CARVALHO@DOUROPHARMA.PT">RITA.CARVALHO@DOUROPHARMA.PT</a>
Tel. no.:	+351 961952543	Website:	



## 1. ENTRIES

All entries must be made on [www.endurogp-registration.com](http://www.endurogp-registration.com). All other information relating to the riders, team, sponsor and the brand of the machine shall be completed.

The entry must include the entry fee payable by bank card, via a secured system. The entry form will be valid once the payment has been made.

Entry fees will be of 320 EUR/ Male Rider, 250 EUR/Women & Youth for the 3 days.

Entry fees for the Enduro Open Class will be of 120 EUR. The renting fees of the transponders are included in the entry fee.

All entries must be received before 20.04.2022 (21 days before the first day of the event). Or will be possible after this dead line with a fine of 50 EUR (30 EUR for Open World Cup) per entry. Local organiser is responsible of the National race entries.

All riders not affiliated to the FMNR must have their entry form endorsed by their own National FMN.

The riders must also sign the official signing-on document on site in order to appear on the official starting list.

## 2. ADMINISTRATIVE AND TECHNICAL CONTROL

The administrative control will take place:

**Date:** 13.05.2022      **Time:** 11:00 – 14:00      **Place:** Avenida do Douro

The technical control will take place:

**Date:** 13.05.2022      **Time:** 12:00 – 15:00      **Place:** Avenida do Douro

During the registration, transponders, holders & mounting instructions will be distributed to participants who are not already in possession of the correct support. The cost of each holder is included in the transponder renting fee.

Each machine must be road legal for the country in which it is registered and comply with all requirements of the FIM Sporting Code and relevant Appendices. Intrinsic parts will be marked in accordance with Art. 062.23.1. A sound test will be carried out in accordance with the Technical Rules.

At the Administrative Control (for not permanent riders, wild card riders) the rider must submit his FIM Rider's Licence, Driving Licence, International Insurance Certificate (Green card).

At the Technical Inspection the rider must submit his motorcycling according to article 062.21 – 062.23, the original registration certificate of the bike (with frame number) and the vehicle registration plate, together with his helmet and body protector.



### 3. STARTING ORDER

The starting order and numbers will be in conformity with Art. 062.34.

### 4. COURSE

**Day 1:** Super Test (prologue). The first riders will start at 19h00 .

The Super Test will be driven as a parallel race in 8-shape; two riders riding at the same time.

#### Day 2:

shall consist of: 3 laps of: 70 km which will include:

number of time checks per lap:	<u>2 (1 TC with service and 1 TC with "GAS)</u>
number of Cross Tests (CT):	<u>3 (Enduro GP and Open/National 2)</u>
number of Enduro Tests (ET):	<u>3 (Enduro GP and Open/National 2)</u>
number of Extreme Tests (XT):	<u>3 (Enduro GP and Open/National 2)</u>
Number of SuperTest (ST):	<u>3 (Enduro GP and Open/National 2)</u>

#### Day 3:

shall consist of: 3 laps of: 70 km which will include:

number of time checks per lap:	<u>2 (1TC with service and 1TC with "GAS)</u>
number of Cross Tests (CT):	<u>3 (Enduro GP and Open/National 2)</u>
number of Enduro Tests (ET):	<u>3 (Enduro GP and Open/National 2)</u>
number of Extreme Tests (XT):	<u>3 (Enduro GP and Open/National 2)</u>
Number of SuperTest (ST):	<u>3 (Enduro GP and Open/National 2)</u>

The location and the length of each test will be displayed at AVENIDA DO DOURO in Peso da Régua, from MAY THE 11<sup>th</sup> at 09h00. (at least 48 hours in advance).

### 5. PENALTIES

Penalties to be in accordance with Art 062.64.

### 6. HEADQUARTERS AND FIM RACE DIRECTION MEETINGS

The headquarters for the event will be situated at: AVENIDA DO DOURO in Peso da Régua

Opening hours of the Office:

<b>Date:</b> From 11 to 15 May of 2022	<b>Time:</b> 10:30	<b>Place:</b> Avenida do Douro, Peso da Régua
--	--------------------	---

The FIM Race Direction meetings will be held at Teatrinho da Régua, Rua da Ferreirinha 14, Peso da Régua according to the standard schedule.



## 7. PRIZE-GIVING CEREMONY

The Prize-Giving Ceremony will take place each day in the start area immediately after the final classified rider of the day has arrived at the finish. Awards will be presented to the first three riders of each category/class.

**Riders must present themselves in their racing equipment.**

## 8. OFFICIALS (FMN Delegates: In accordance with Art. 062.6.1)

<b>FIM/CEN Representative:</b>			
<b>Race Direction</b>			
<b>FIM Race Director:</b>	Pedro Mariano	<b>FIM Licence:</b>	15173 / 4391
<b>FIM Course Inspector:</b>	Maurizio Micheluz	<b>FIM Licence:</b>	15178 / 4464
<b>Clerk of the Course:</b>	Celestino Cruz	<b>FIM Licence:</b>	15933
		<b>FIM Super Licence:</b>	4700
<b>Assist. Clerk of the Course:</b>	Filipe Sampaio		
<b>Steward Panel</b>			
<b>FIM Steward:</b>	Henri Saari	<b>FIM Licence:</b>	15174 / 4460
<b>FMNR Steward:</b>	tba	<b>FIM Licence:</b>	
<b>Technical Delegates</b>			
<b>FIM Technical Director:</b>	Roger Johansson	<b>FIM Licence:</b>	14557
<b>FMNR Chief Technical Steward:</b>	António Pego	<b>FIM Senior Licence:</b>	14828
<b>FMNR Technical Steward:</b>	Mário Lopes	<b>FIM Licence:</b>	14821
<b>Medical Delegates</b>			
<b>FIM Medical Delegate (if applicable):</b>		<b>FIM Licence:</b>	
<b>Chief Medical Officer:</b>	Dr. Pedro Verão	<b>FIM Licence:</b>	15488
<b>Environmental Delegates</b>			
<b>FIM Environmental Delegate (if applicable):</b>		<b>FIM Licence:</b>	
<b>FMNR Environmental Steward:</b>	Nelson Correia	<b>FIM Licence:</b>	13171
<b>FMNR Safety Steward:</b>			
<b>Timekeeper:</b>	Nikos Andritsakis/Infomega	<b>FIM Licence:</b>	12171
<b>Press Officer:</b>	João Vigário		
<b>Secretary of the Jury:</b>	Rita Carvalho		
<b>Promoter:</b>	Prime Stadium		

The list of officials (name + No. of licence) of the organisation will be displayed on the notice board and the list communicated to all the participants and members of the Jury.



## 9. HOTEL LIST:

Please visit official website:

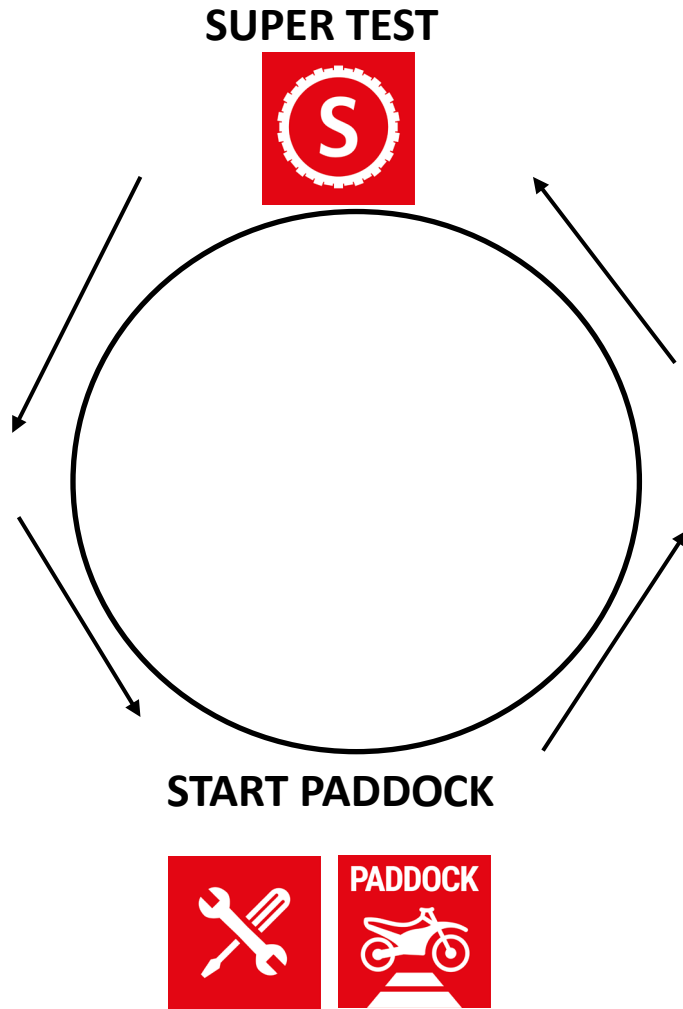
<https://www.cm-pesoregua.pt/pages/587>

<https://www.cm-armamar.pt/pages/496>



**DIAGRAM – SUPERT TEST – DAY 1 FRIDAY 13 OF MAY 2022**

**Start Time: 19:00**

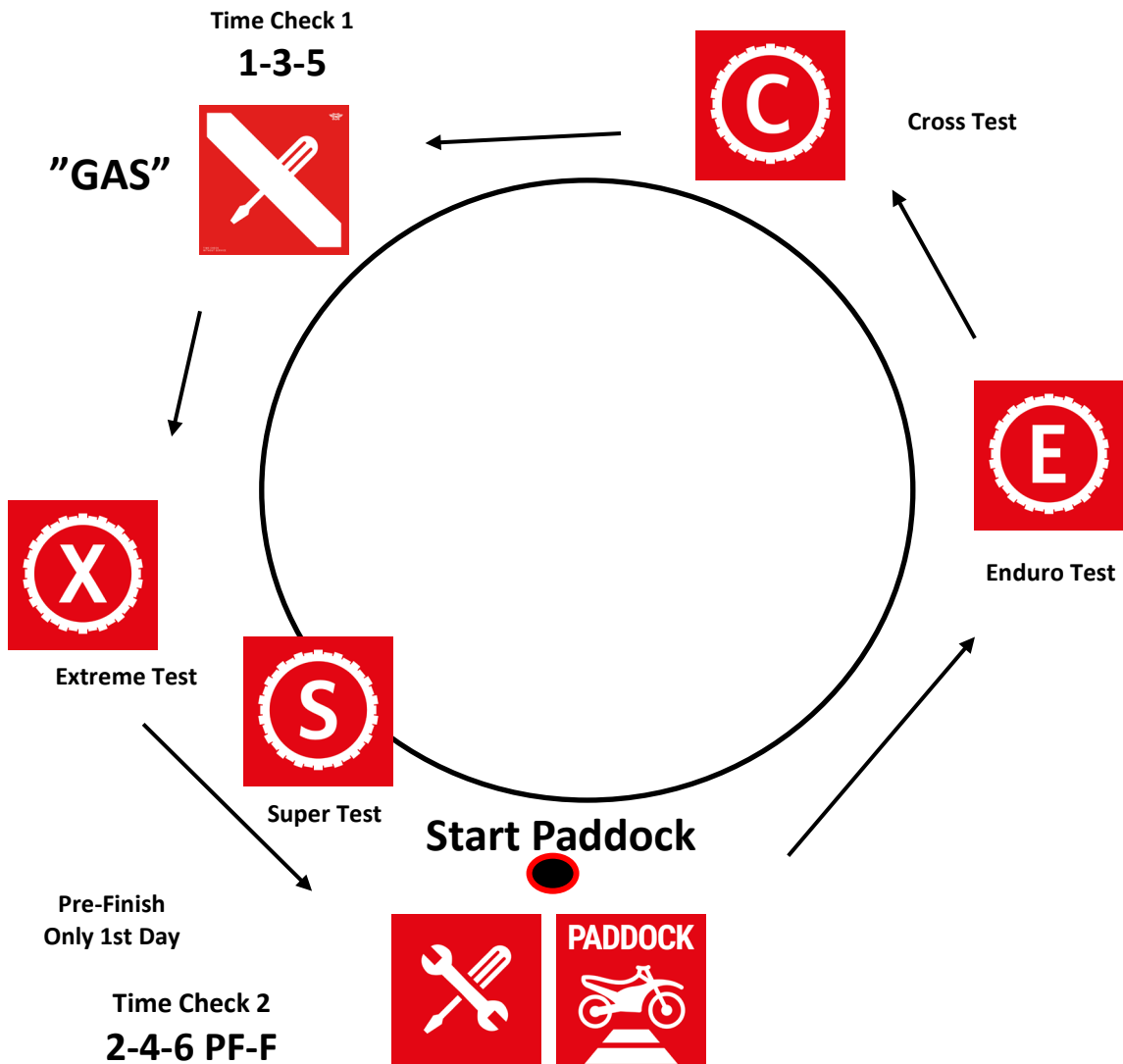


**TOTAL TIME 120min**



**DIAGRAM – DAY 2 AND DAY 3 (SATURDAY 14 AND SUNDAY 15 OF MAY 2022)**

**Start Time: 09:00**



**TOTAL TIME 6:45 / 7:00**



### STANDARD SCHEDULE FOR THE FIM ENDURO WORLD CHAMPIONSHIP

<b>Wednesday</b>	14:00	Opening of the Paddock
	Approx. 14:00	Distribution of Timetables, time sheets and itineraries.
<b>Thursday</b>	14:00 - 18:00	Opening of practice area
	14:00	Opening of headquarters
	14:00	Opening of press room
	18:00	Meeting with the organisers and the Race Director
<b>Friday</b>	09:00	1 <sup>st</sup> Race Direction Meeting
	09:00 - 11:00	Practice Area
	11:00 - 14:00	Administrative Control
	12:00 – 15:00	Technical Control
	15:30	2 <sup>nd</sup> Race Direction Meeting
	16:30	Riders' Briefing
	19:00 - 21:00	Super Test (Prologue) - After the Super Test, the motorcycles will be put in the Parc-Fermé.
<b>Saturday</b>	09:00	1 <sup>st</sup> Start
	Immediately after the arrival of the last rider for the 3 first classified per class	Prize-Giving Ceremony organised by the Promoter
	19:00	3 <sup>rd</sup> Race Direction Meeting
<b>Sunday</b>	09:00	1 <sup>st</sup> Start
	Immediately after the arrival of the last rider for the 3 first classified per class	Prize-Giving Ceremony organised by the Promoter
	17:00	4 <sup>th</sup> and last Race Direction Meeting





## PADDOCK

LOCAL: PESO DA RÉGUA

LATITUDE 41° 9'47.39"N

LONGITUDE 7°47'36.08"W

GPS: <https://goo.gl/maps/5MvdrKyK4SSFcGR9A>





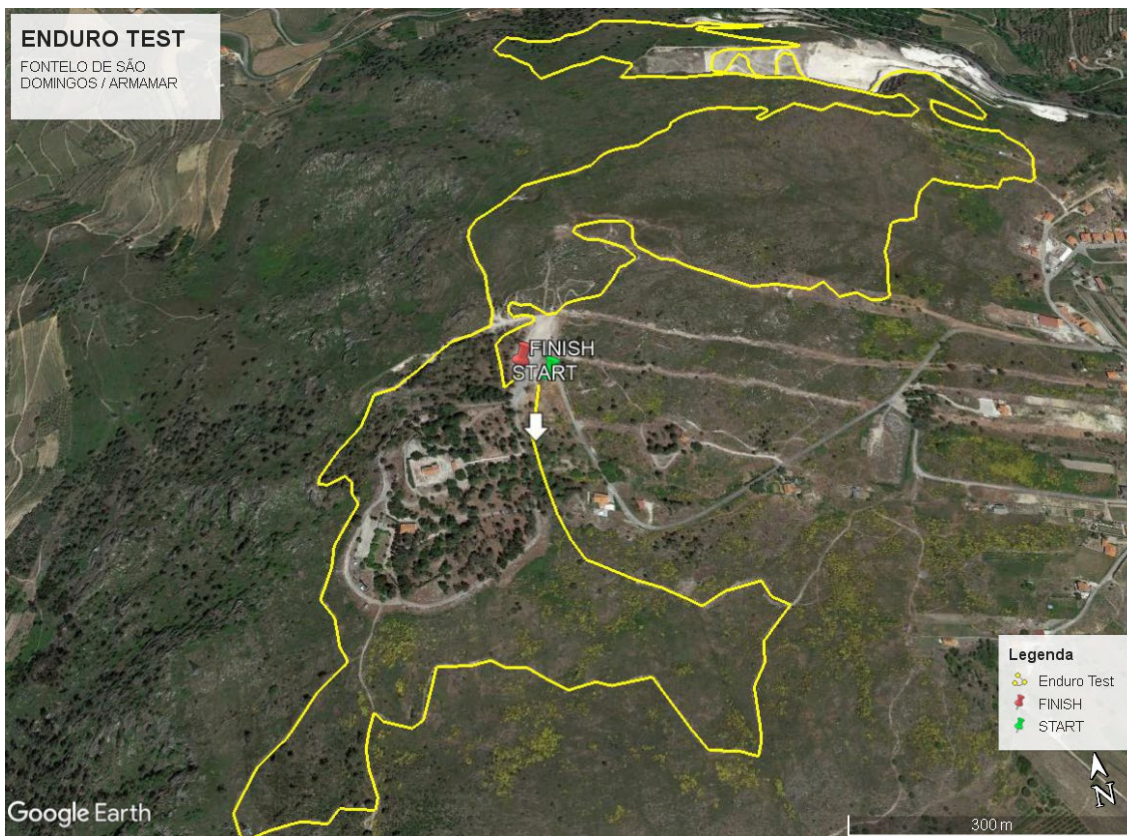
**SPECIAL: ENDURO TEST**

LOCAL: FONTELO DE SÃO DOMINGOS / ARMAMAR

LATITUDE 41° 7'17.03"N

LONGITUDE 7°44'40.90"W

GPS: <https://goo.gl/maps/eQhR3EecvuryuqtV6>





**SPECIAL: CROSS TEST**

LOCAL: ARMAMAR

LATITUDE 41° 6'6.32"N

LONGITUDE 7°39'49.05"W

GPS: <https://goo.gl/maps/yCnLaY3r7PFFw6PH6>





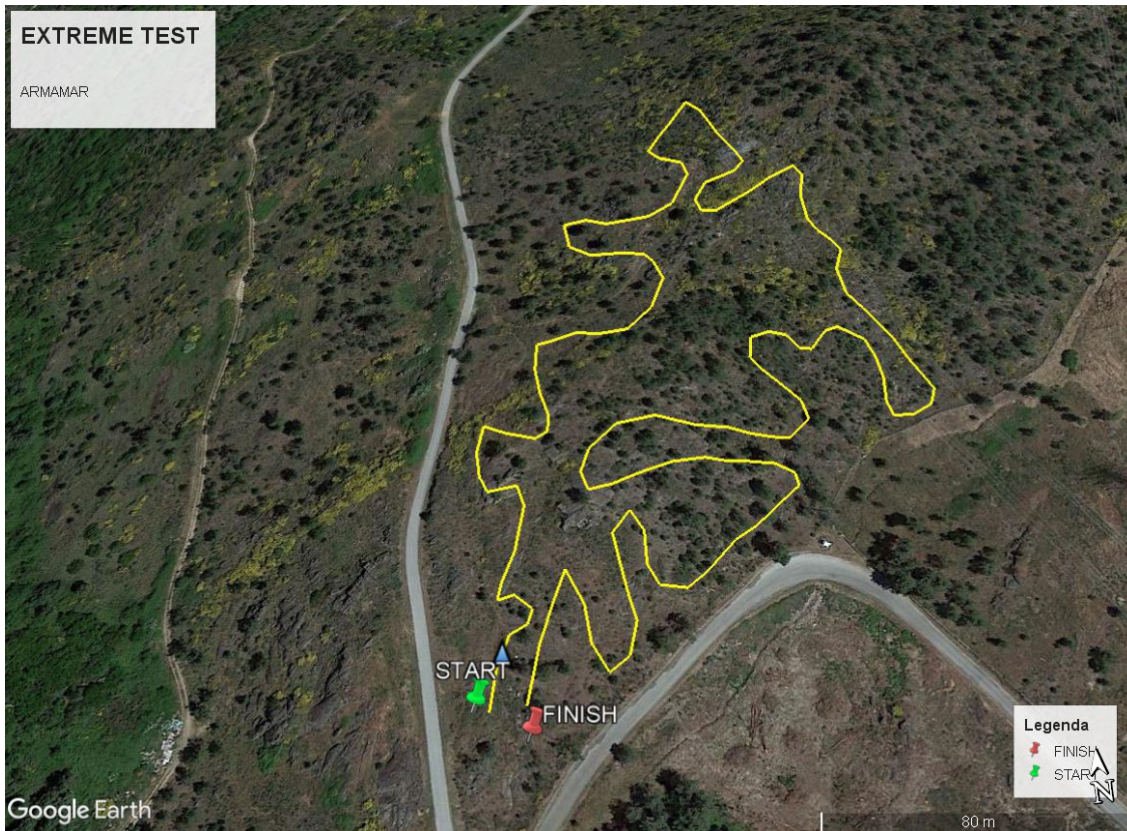
**SPECIAL: EXTREME TEST**

LOCAL: ARMAMAR

LATITUDE 41° 6'7.58"N

LONGITUDE 7°40'5.96"W

GPS: <https://goo.gl/maps/GUp4UPFo8w8iUZYL6>





**SPECIAL: SUPER TEST**

**LOCAL: PESO DA RÉGUA**

LATITUDE 41° 9'16.76"N

LONGITUDE 7°46'45.91"W

GPS: <https://goo.gl/maps/ri4fd9k6mdZeKJvHA>

**TRAINING AREA**

**LOCAL: PESO DA RÉGUA**

LATITUDE 41° 9'15.33"N

LONGITUDE 7°46'38.80"W

GPS: <https://goo.gl/maps/ZNfV3wCsXdGr6BB58>

