



PROVISIONAL PROGRAM

The event will be held in: PESO DA RÉGUA E ARMAMAR, PORTUGAL

Date: May 13, 14 and 15 of 2022

PROVISIONAL SCHEDULE

WPTGLOBAL FIM ENDUROGP WORLD CHAMPIONSHIP

Thursday	14:00 - 18:00	Opening of practice area
	14:00	Opening of headquarters
	14:00	Opening of press room
	18:00	Meeting with the organisers and the Race Director

Friday	09:00	1st Race Direction Meeting
	09:00 - 11:00	Practice Area
	11:00 - 14:00	Administrative Control
	12:00 - 15:00	Technical Control
	15:30	2nd Race Direction Meeting
	16:30	Riders' Briefing
	19:00 - 21:00	Super Test (Prologue) - After the Super Test, the motorcycles will be put in the Parc-Fermé.





PROVISIONAL SCHEDULE

WPTGLOBAL FIM ENDUROGP WORLD CHAMPIONSHIP

Saturday	09:00	1st Start
	Immediately after the arrival of the last rider for the 3 first classified per class	Prize-Giving Ceremony organised by the Promoter
	19:00	3rd Race Direction Meeting

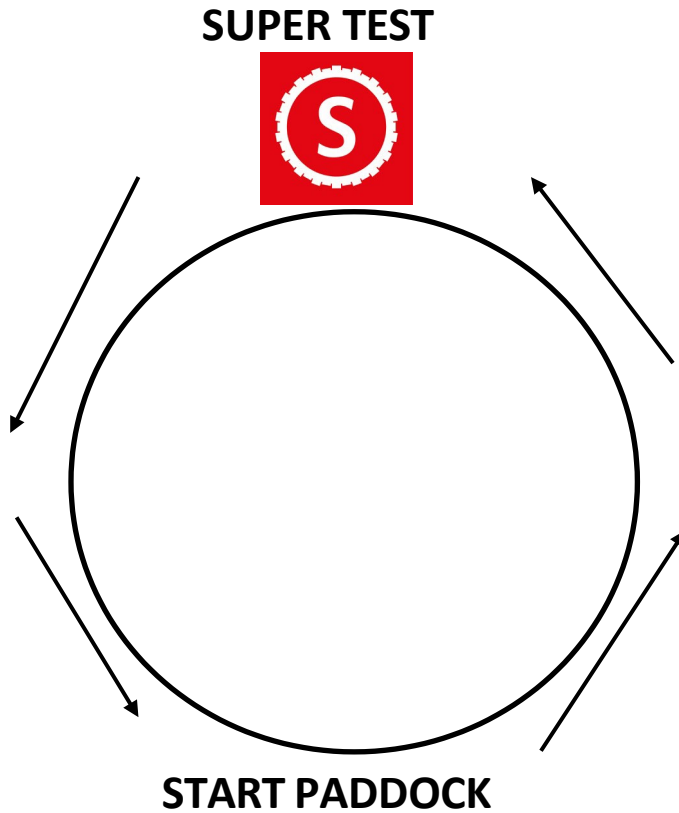
Sunday	09:00	1st Start
	Immediately after the arrival of the last rider for the 3 first classified per class	Prize-Giving Ceremony organised by the Promoter
	17:00	4th and last Race Direction Meeting





DIAGRAM – SUPERT TEST – DAY 1 FRIDAY 13 OF MAY 2022

Start Time: 19:00

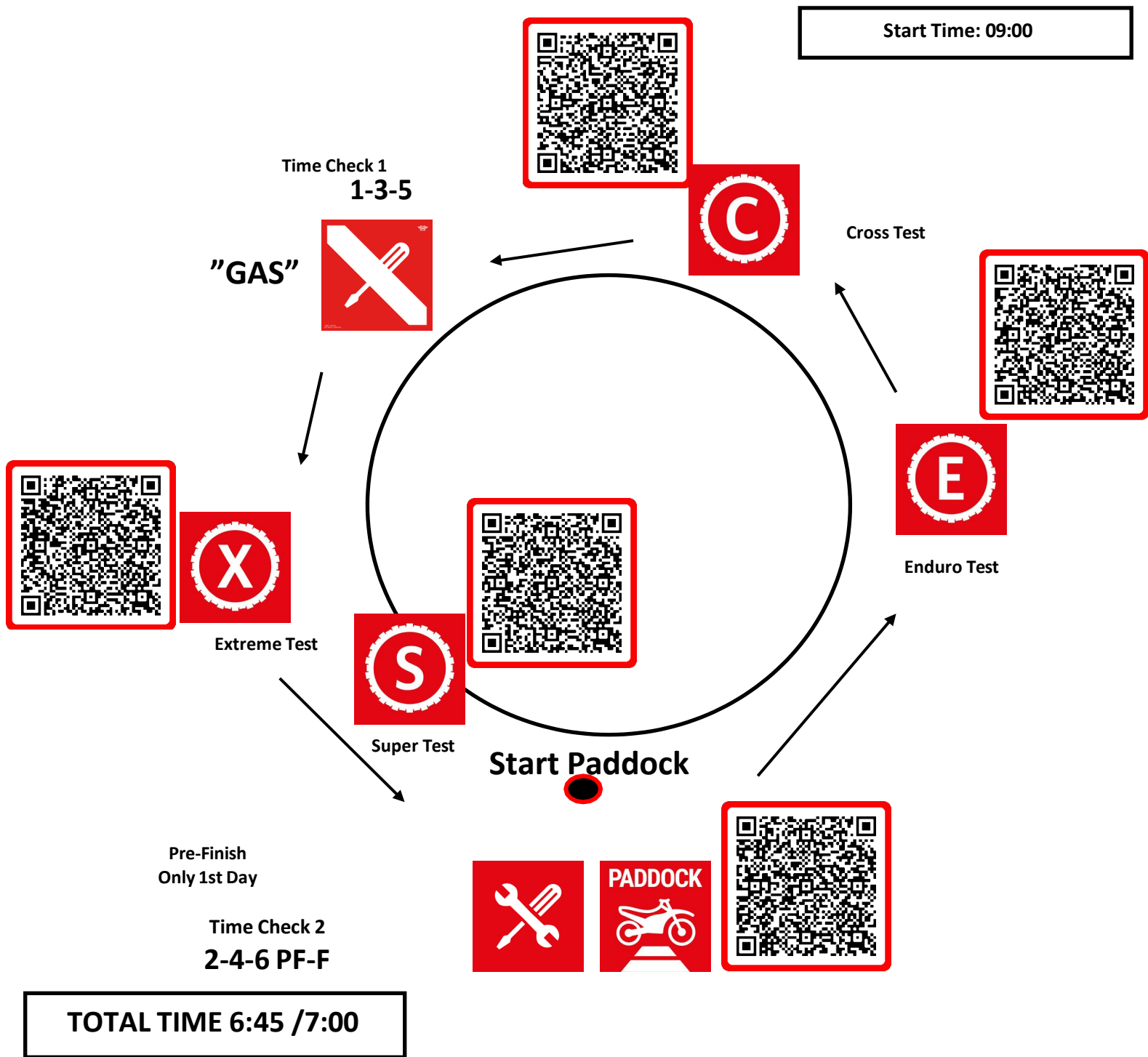


TOTAL TIME 120min





DIAGRAM – DAY 2 AND DAY 3 (SATURDAY 14 AND SUNDAY 15 OF MAY 2022)





PADDOCK

LOCAL: PESO DA RÉGUA

LATITUDE 41° 9'47.39"N

LONGITUDE 7°47'36.08"W

GPS: <https://goo.gl/maps/5MvdrKyK4SSFcGR9A>





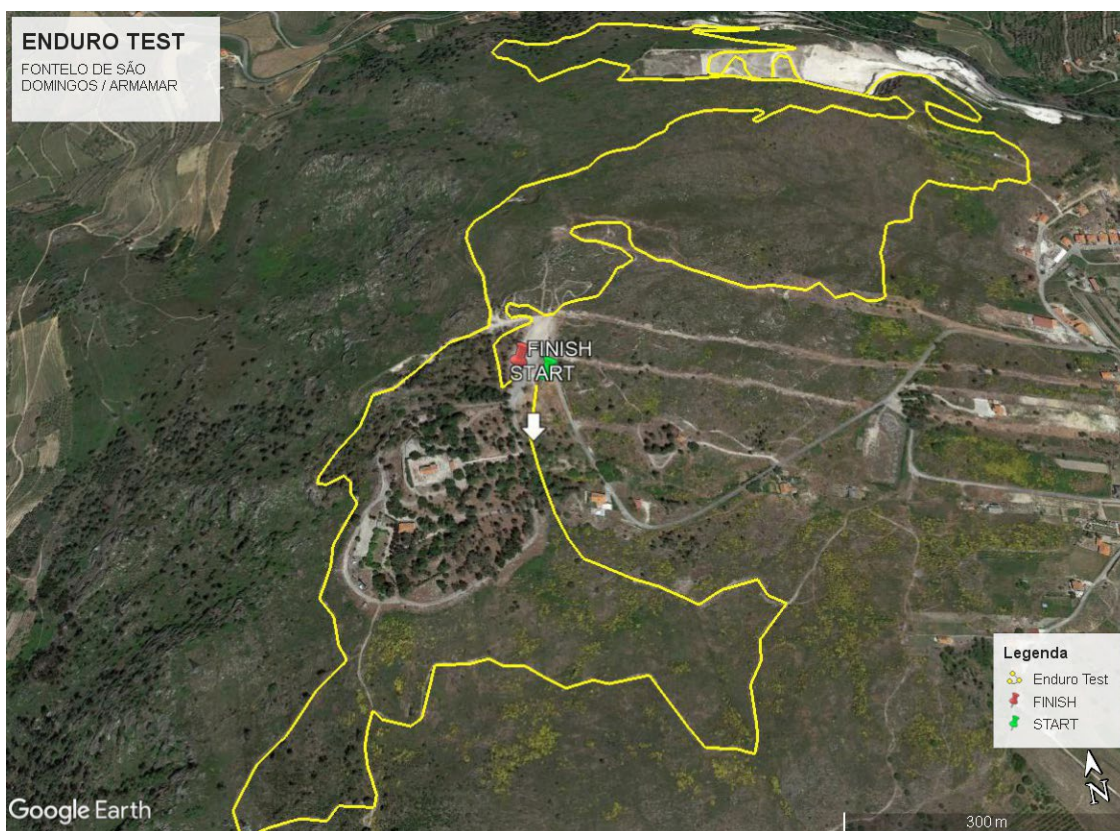
ENDURO TEST

LOCAL: FONTELO DE SÃO DOMINGOS/ARMAMAR

LATITUDE 41° 7'17.03"N

LONGITUDE 7°44'40.90"W

GPS: <https://goo.gl/maps/eQhR3EecvuryuqtV6>





CROSS TEST

LOCAL: ARMAMAR

LATITUDE 41° 6'6.32"N

LONGITUDE 7°39'49.05"W

GPS: <https://goo.gl/maps/yCnLaY3r7PFFw6PH6>





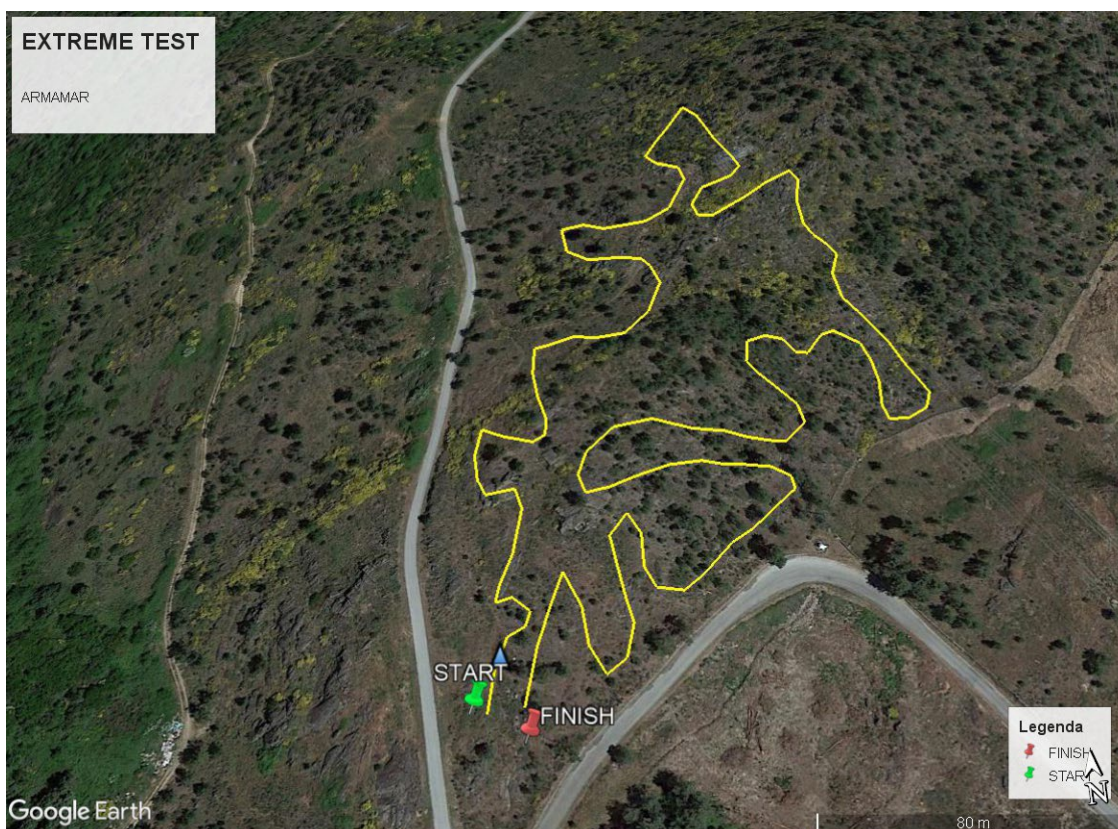
EXTREME TEST

LOCAL: ARMAMAR

LATITUDE 41° 6'7.58"N

LONGITUDE 7°40'5.96"W

GPS: <https://goo.gl/maps/GUp4UPFo8w8iUZYL6>





WPT
GLOBAL
enduro
GP
FIM WORLD CHAMPIONSHIP

prime
stadium

RACE
FOR
GOOD

SUPER TEST LOCAL: PESO DA RÉGUA

LATITUDE 41° 9'16.76"N

LONGITUDE 7°46'45.91"W

GPS: <https://goo.gl/maps/ri4fd9k6mdZeKjvHA>



TRAINING AREA

LOCAL: PESO DA RÉGUA

LATITUDE 41° 9'15.33"N

LONGITUDE 7°46'38.80"W

GPS: <https://goo.gl/maps/ZNfV3wCsXdGr6BB58>



Sevafredo
ZANETTI



Quinta do Mourão

GALFER
MOTORCYCLE EQUIPMENT

PRAMAC

Paulo Duarte
GROUP

KTM

AKRAPOVIČ

Husqvarna
MOTORCYCLES

WPT
GLOBAL

MAXXIS
TIRES

GASGAS

Polisport

Magnorange

ACERBIS

CROSSPRO
PROTECTION PARTS

JUST

W.P.

AMV

pgm

Galati